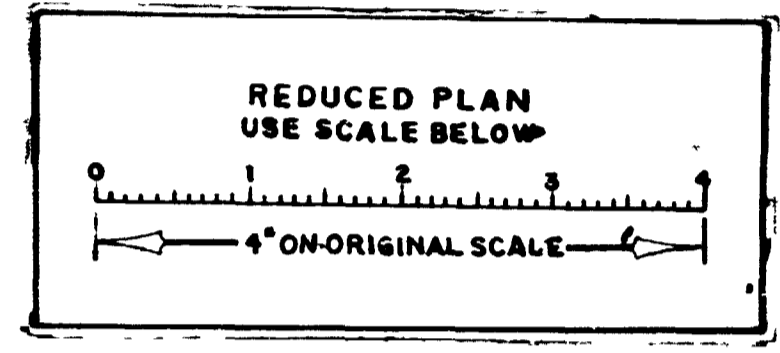
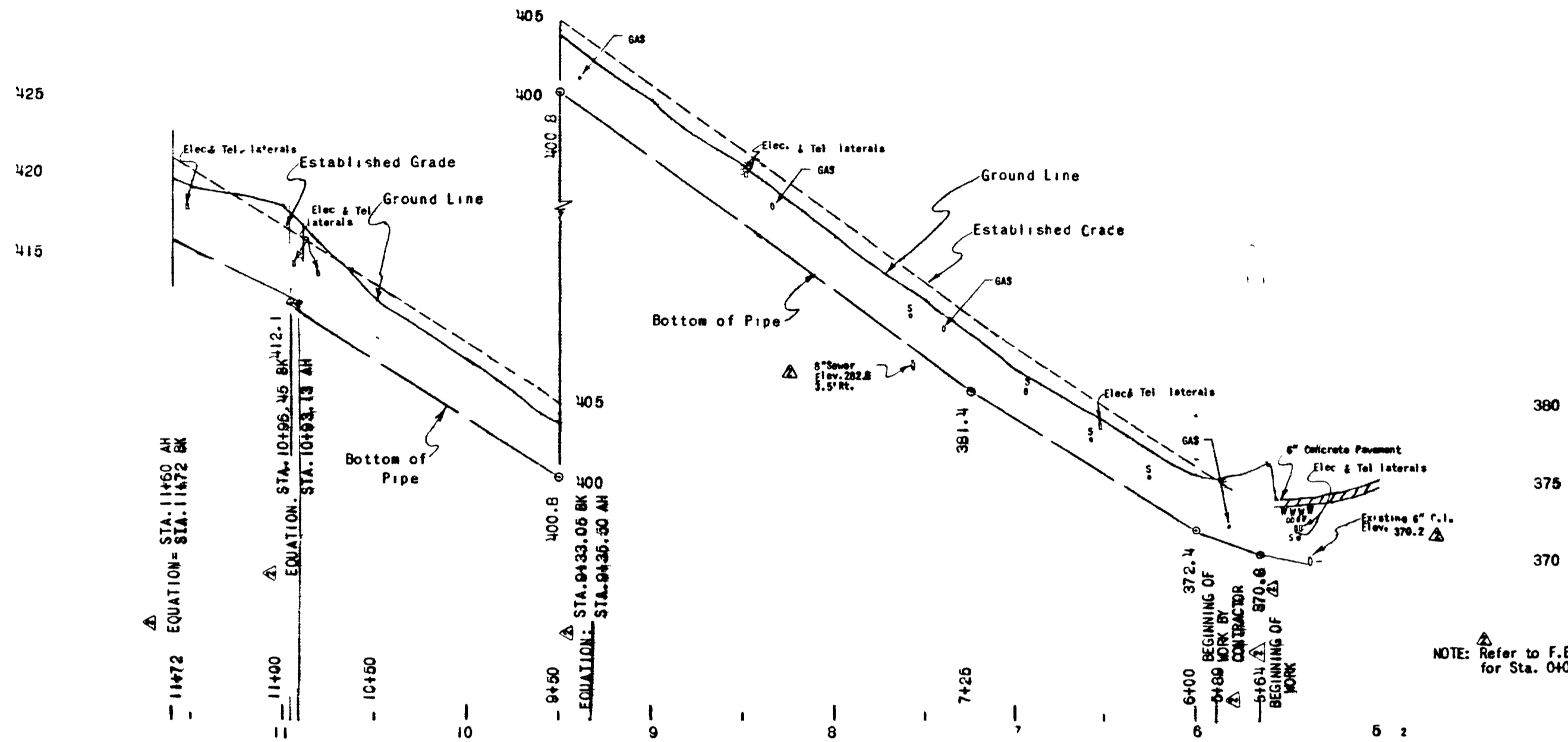


LANE

MUIRLANDS DRIVE

CONTRACTOR Schafer & Stowers
 CONSTRUCTED Oct. & Nov., 1956
 PIPE: 6" Asbestos Cement, Class 150, (Century)
 VALVES: Rich
 FIRE HYDRANT: Greenberg
 FITTINGS: Cast Iron, Class 200, A.S.A. (short body)
 TEST PRESSURE - 1hr. Visual @ 225 psi
 SOIL - granular-except Sta. 12420 to 12460 hard granite intrusion
 BACKFILL - same
 STAKES & GRADES - F.B. 864
 WORK done by Contractor on WO 67201
 WORK done by City Force on WO 14288 11-27-56



BENCH MARK:
 B.P. in base of lamp post
 L&T's 1/2 Blk. 19
 Elev. 418.33'

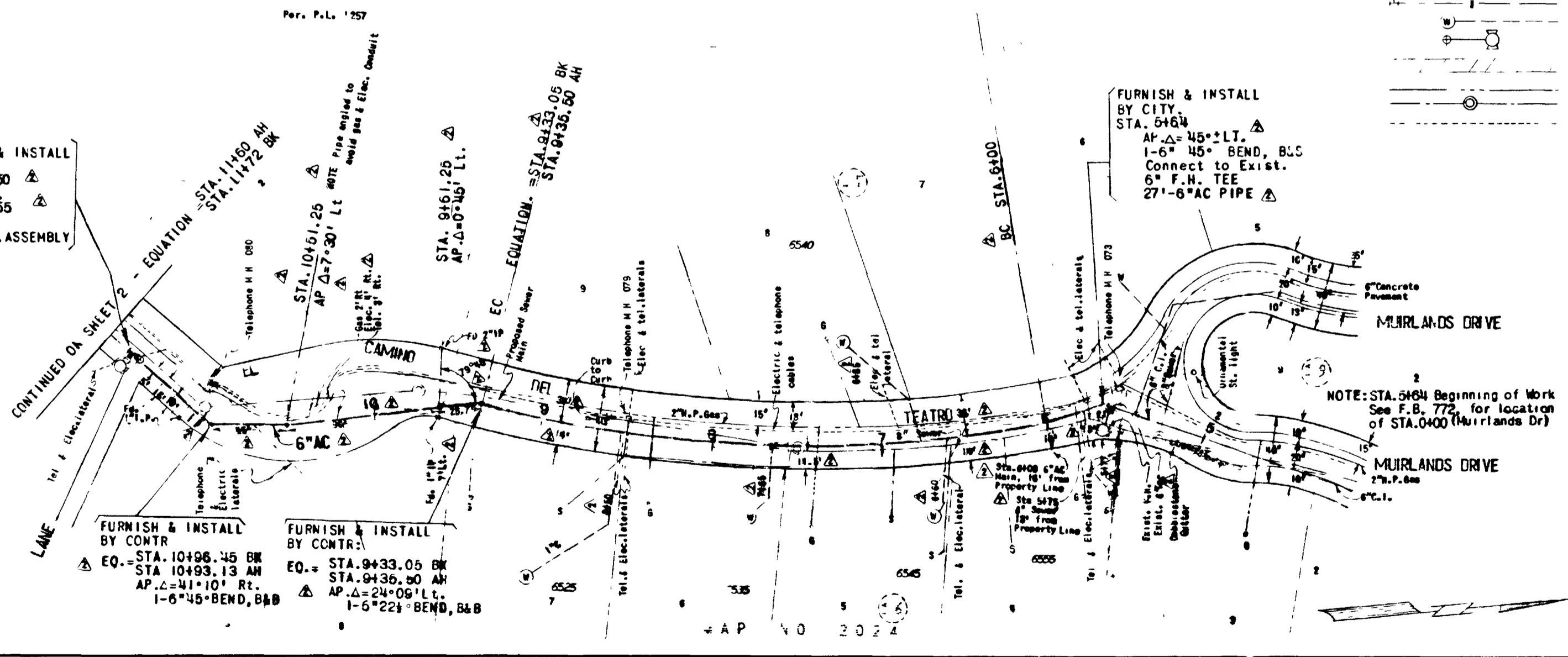
NOTE: Refer to F.B. 772 for Sta. 0400 (Muirlands Dr.)

LEGEND

	Proposed water main, tee & gate valve
	Existing water main, tee & G.V.
	Water service lateral
	Fire hydrant assembly
	Pavement
	Gas main
	Sewer main & manhole
	Electric & telephone cables & laterals

Ref. Dwg:
 Water & Sewer Bks. 7A, Shts. 2104, 2117, 2120
 Gas Bk. 13, Shts. 502, 303
 Profile Sht. #3180
 Gate Bk. Pg. B-100, B-101

OFFICE CHECK	INITIAL	DATE
County Surveyor		
Culverts & Drains	CRJ	1-12-56
SD Gas & Electric Co.	GRD	1-6-56
Electric Co.	GRD	1-29-56
Sewers	GRD	1-22-56
State Highway		
Street Grades		1-12-56
Telephone Co.		1-13-56
Water Distribution		1-10-56
Public Works Division		1-6-56
Field (City Engr.)		1-25-56



SPEC NO 134

DATE	BY	REVISION
11-29-55	J. Gray	1
11-29-55	J. Gray	2
11-29-55	J. Gray	3
11-29-55	J. Gray	4
11-29-55	J. Gray	5
11-29-55	J. Gray	6
11-29-55	J. Gray	7
11-29-55	J. Gray	8
11-29-55	J. Gray	9
11-29-55	J. Gray	10
11-29-55	J. Gray	11
11-29-55	J. Gray	12
11-29-55	J. Gray	13
11-29-55	J. Gray	14
11-29-55	J. Gray	15
11-29-55	J. Gray	16
11-29-55	J. Gray	17
11-29-55	J. Gray	18
11-29-55	J. Gray	19
11-29-55	J. Gray	20
11-29-55	J. Gray	21
11-29-55	J. Gray	22
11-29-55	J. Gray	23
11-29-55	J. Gray	24
11-29-55	J. Gray	25
11-29-55	J. Gray	26
11-29-55	J. Gray	27
11-29-55	J. Gray	28
11-29-55	J. Gray	29
11-29-55	J. Gray	30
11-29-55	J. Gray	31
11-29-55	J. Gray	32
11-29-55	J. Gray	33
11-29-55	J. Gray	34
11-29-55	J. Gray	35
11-29-55	J. Gray	36
11-29-55	J. Gray	37
11-29-55	J. Gray	38
11-29-55	J. Gray	39
11-29-55	J. Gray	40
11-29-55	J. Gray	41
11-29-55	J. Gray	42
11-29-55	J. Gray	43
11-29-55	J. Gray	44
11-29-55	J. Gray	45
11-29-55	J. Gray	46
11-29-55	J. Gray	47
11-29-55	J. Gray	48
11-29-55	J. Gray	49
11-29-55	J. Gray	50

CITY OF SAN DIEGO CALIFORNIA
 WATER DEPARTMENT
 SMALL WATER MAIN REPLACEMENTS, 1955-56
 EL CAMINO DEL TEATRO 6" A.C. MAIN
 MUIRLANDS DRIVE TO 1421' SOUTH

RECOMMENDED: J.C. Brown, ENGINEER
 APPROVED: [Signature], DIRECTOR

DATE: November 29, 1955
 DATUM: City
 DRAWN: J. Gray
 CHECKED: [Signature]
 SCALE: 1" = 50' Horizontal, 1" = 6' Vertical
 GROUP 26, SHEET 1 OF 2 SHEETS, DWG NO 7079-W

AS BUILT

4 CORRELMED
 JAN 29 1956