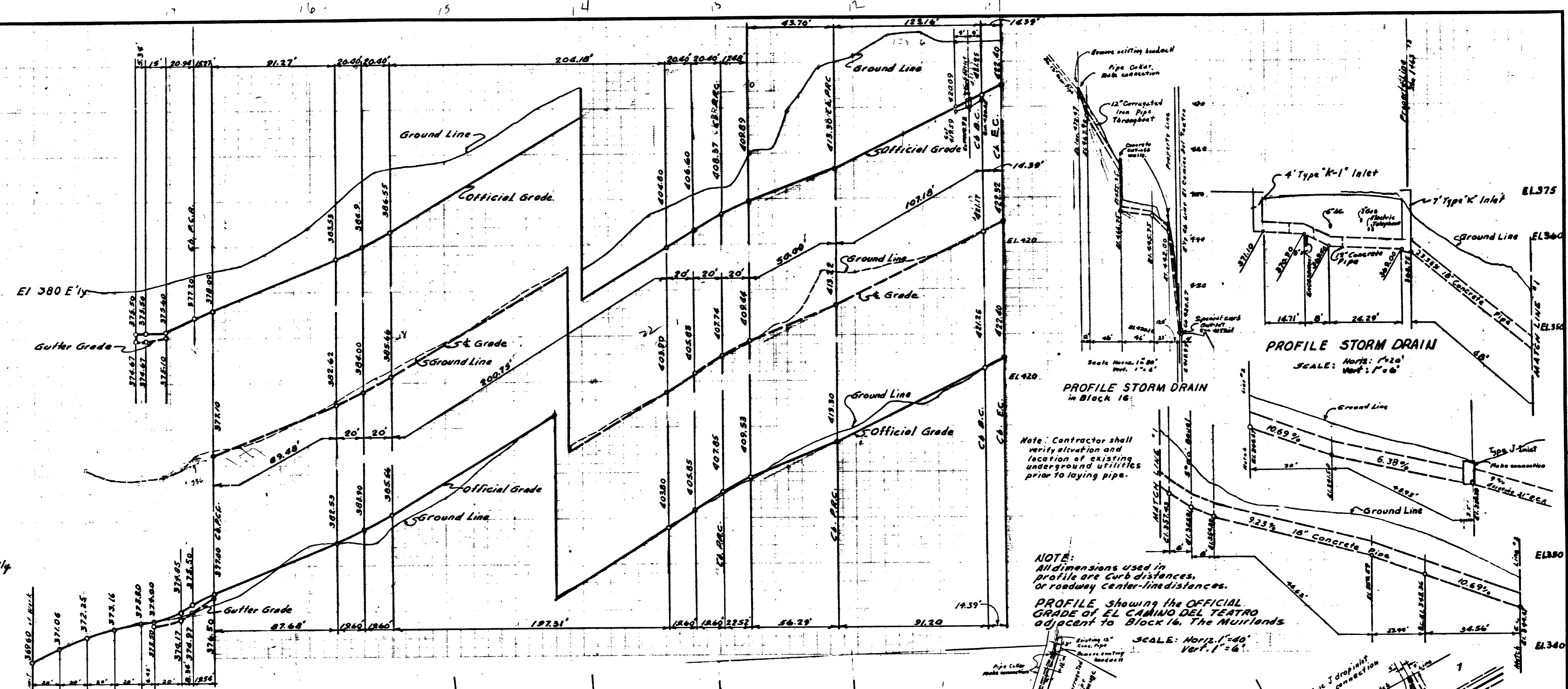


DETAIL OF CURB OUTLET  
Scale: 1"=2'

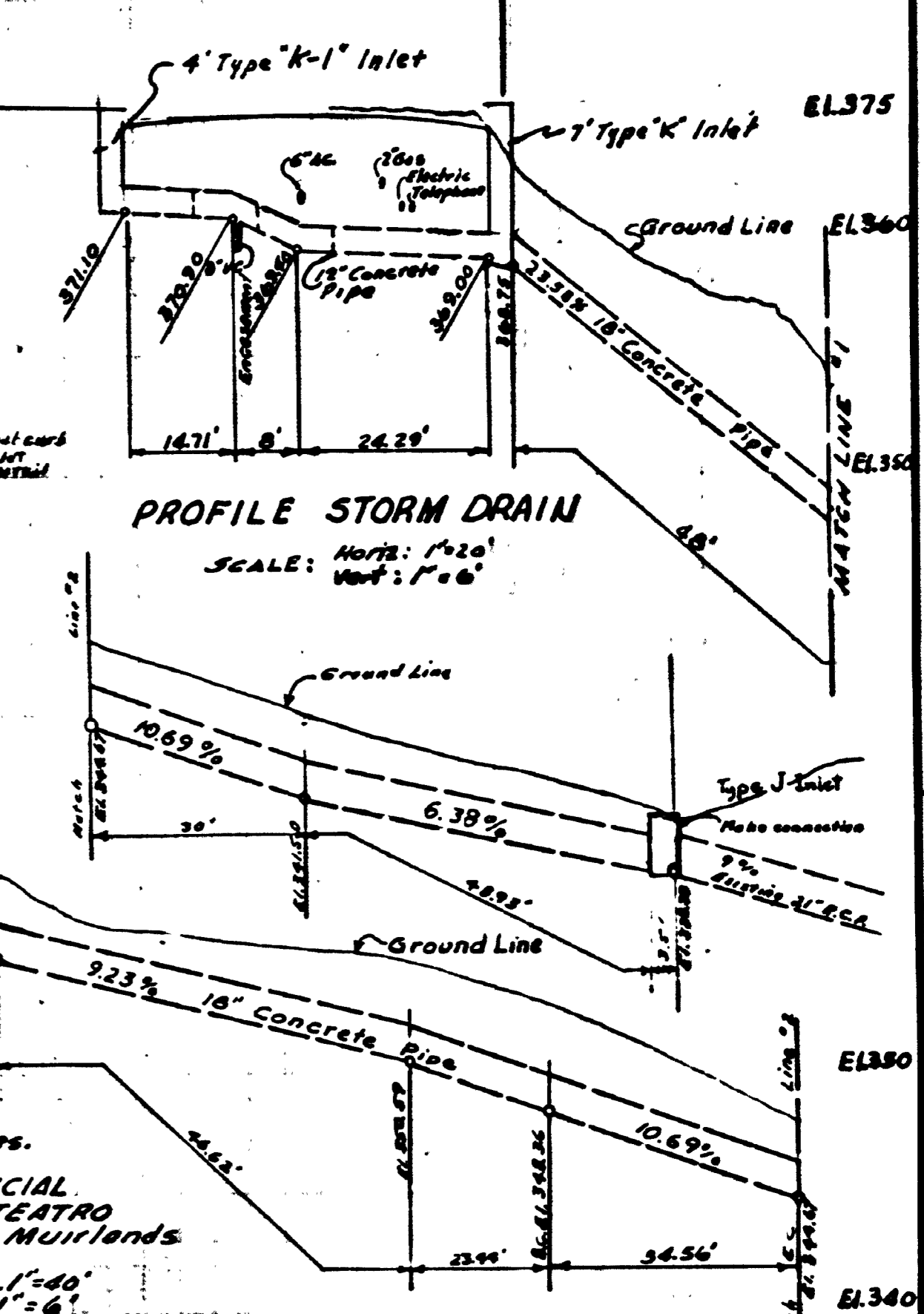


PROFILE STORM DRAIN in Block 16

Note: Contractor shall verify elevation and location of existing underground utilities prior to laying pipe.

NOTE: All dimensions used in profile are curb distances, or roadway center-line distances.  
PROFILE showing the OFFICIAL GRADE of EL CAMINO DEL TEATRO adjacent to Block 16, The Muirlands

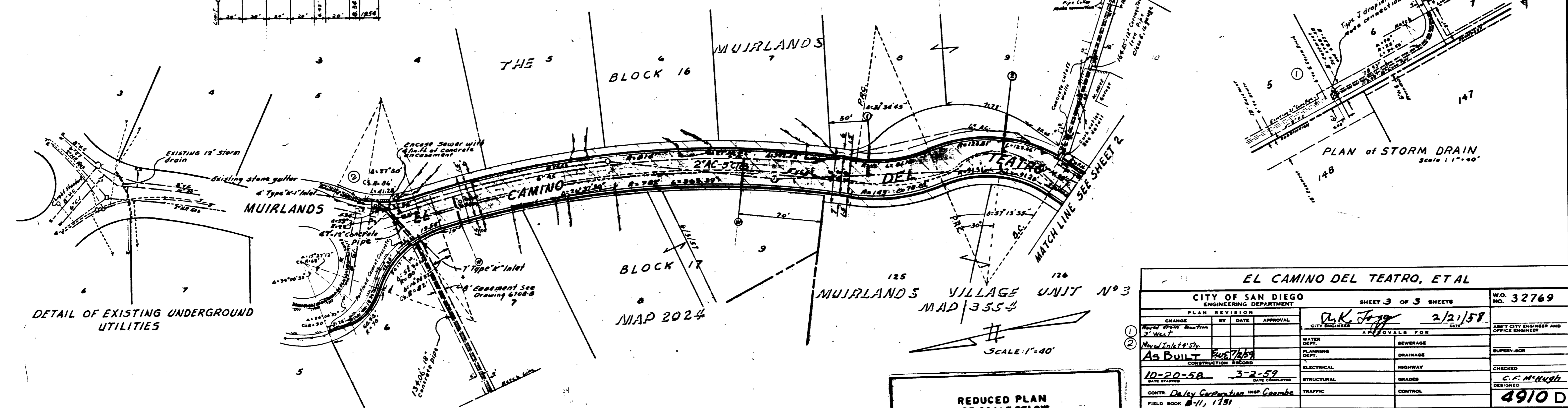
SCALE: Horiz: 1"=40'  
Vert: 1"=4'



PROFILE STORM DRAIN

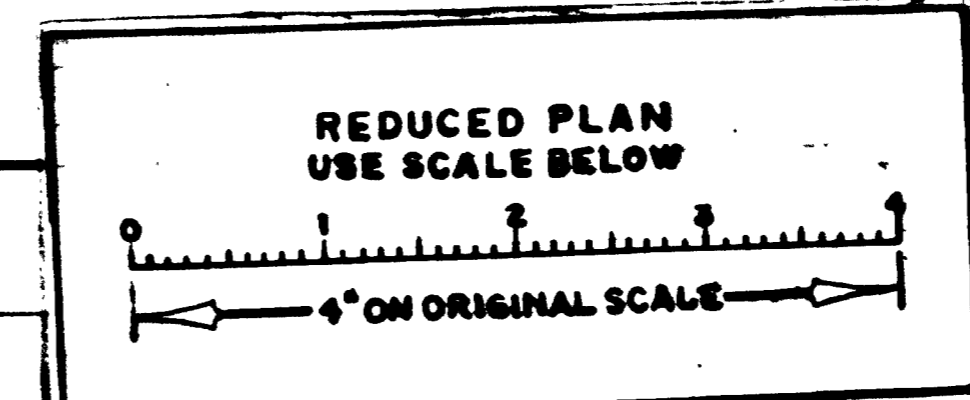
SCALE: Horiz: 1"=20'  
Vert: 1"=4'

B.M. B.P.M.E El Camino del Teatro and Muirlands Drive, on end of curb inlet. EI. 500.62



DETAIL OF EXISTING UNDERGROUND UTILITIES

PLAN of STORM DRAIN  
Scale: 1"=40'



EL CAMINO DEL TEATRO, ET AL				SHEET 3 OF 3 SHEETS		W.D. 32769
CITY OF SAN DIEGO ENGINEERING DEPARTMENT						
PLAN REVISION						
CHANGE	BY	DATE	APPROVAL			
1	Revised Storm Drain	2/2/58	D.K. Jorgensen	CITY ENGINEER		DEPT CITY ENGINEER AND OFFICE ENGINEER
2	Moved Inlet 14' S/W			APPROVALS FOR		
As BUILT 2/26/58				PLANNING DEPT.	SEWERAGE	SUPERVISOR
CONSTRUCTION RECORD				ELECTRICAL	HIGHWAY	CHECKED
10-20-58 3-2-59				STRUCTURAL	GRADES	DESIGNED
CONTR. Daley Construction Inst. Coombs				TRAFFIC	CONTROL	
FIELD BOOK 8-11, 1191						4910 D

MICROFILMED INDEXED  
AUG 21 1963