

WORK TO BE DONE SCHEDULE

| IMPROVEMENTS | START DATE | END DATE |
|-----------------------|------------|----------|
| Paving | 6-56-67 | |
| Grading | 6-25-65 | |
| Type 3 Curb | 6-1-65 | |
| Staircase | 6-1-65 | |
| Water Main | 4-55-67 | 4-67 |
| Water Service Lateral | 4-55-67 | 4-67 |
| Sewer Lateral | 5-22-66 | |
| Sewer Manhole | 5-1-59 | |
| Street Light System | 5-11-67 | |
| A.C. Service | 6-21-64 | |
| Drainage Outlet | 9-20-54 | |
| Excavating Work | 2-1-56 | |
| Type "DS" Guard Post | 7-9-62 | |
| Drainage Ditch | 1-15-65 | |

STANDARD SPECIFICATIONS & DRAWINGS

The Improvements Consist of the Above Work to Be Done According to these Plans and Specifications of the City of San Diego Standard Specifications Part I, Filed April 9, 1953, Including Amendment Filed April 8, 1959, and November 29, 1960, and Section Filed April 5, 1961, and March 4, 1962, and Standard Specifications No. 71, 75, 76, 77, 78, 79, 80, 81, 82, 83, 84, 85, 86, 87, 88, 89, 90, 91, 92, 93, 94, 95, 96, 97, 98, 99, 100, 101, 102, 103, 104, 105, 106, 107, 108, 109, 110, 111, 112, 113, 114, 115, 116, 117, 118, 119, 120, 121, 122, 123, 124, 125, 126, 127, 128, 129, 130, 131, 132, 133, 134, 135, 136, 137, 138, 139, 140, 141, 142, 143, 144, 145, 146, 147, 148, 149, 150, 151, 152, 153, 154, 155, 156, 157, 158, 159, 160, 161, 162, 163, 164, 165, 166, 167, 168, 169, 170, 171, 172, 173, 174, 175, 176, 177, 178, 179, 180, 181, 182, 183, 184, 185, 186, 187, 188, 189, 190, 191, 192, 193, 194, 195, 196, 197, 198, 199, 200.

PROPERTY RECORDS

Easement Exchange 11677 -B

REFERENCE DRAWINGS

Sewer Plans Per. Dwg. 7863-D
 Fairway Road Per. Dwg. 6612-D
 Water Plans Per. Dwg. 11038-L, & 12929-D

SITE DEVELOPMENT

(SEE Sheet #2)

SPECIAL NOTE

Connections to existing water mains shown on these plans will be made by the City of San Diego Utilities Department. The Cost of connections shown in this plan.

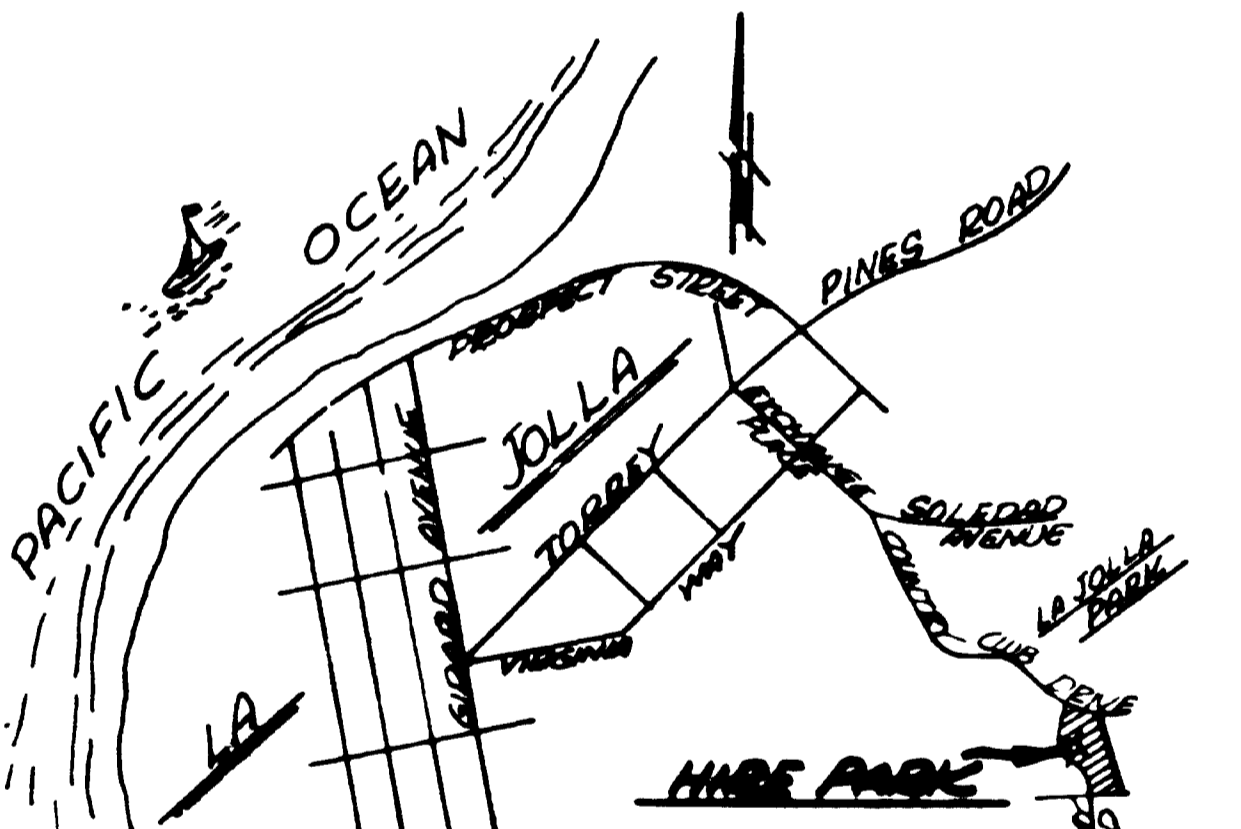
CONNECTION NO. 1,9460.00. CONVENTION NO. 1,9460.00

NOTE:

Subdivider shall arrange for public utilities systems to be installed in accordance with the City of San Diego Municipal Code.

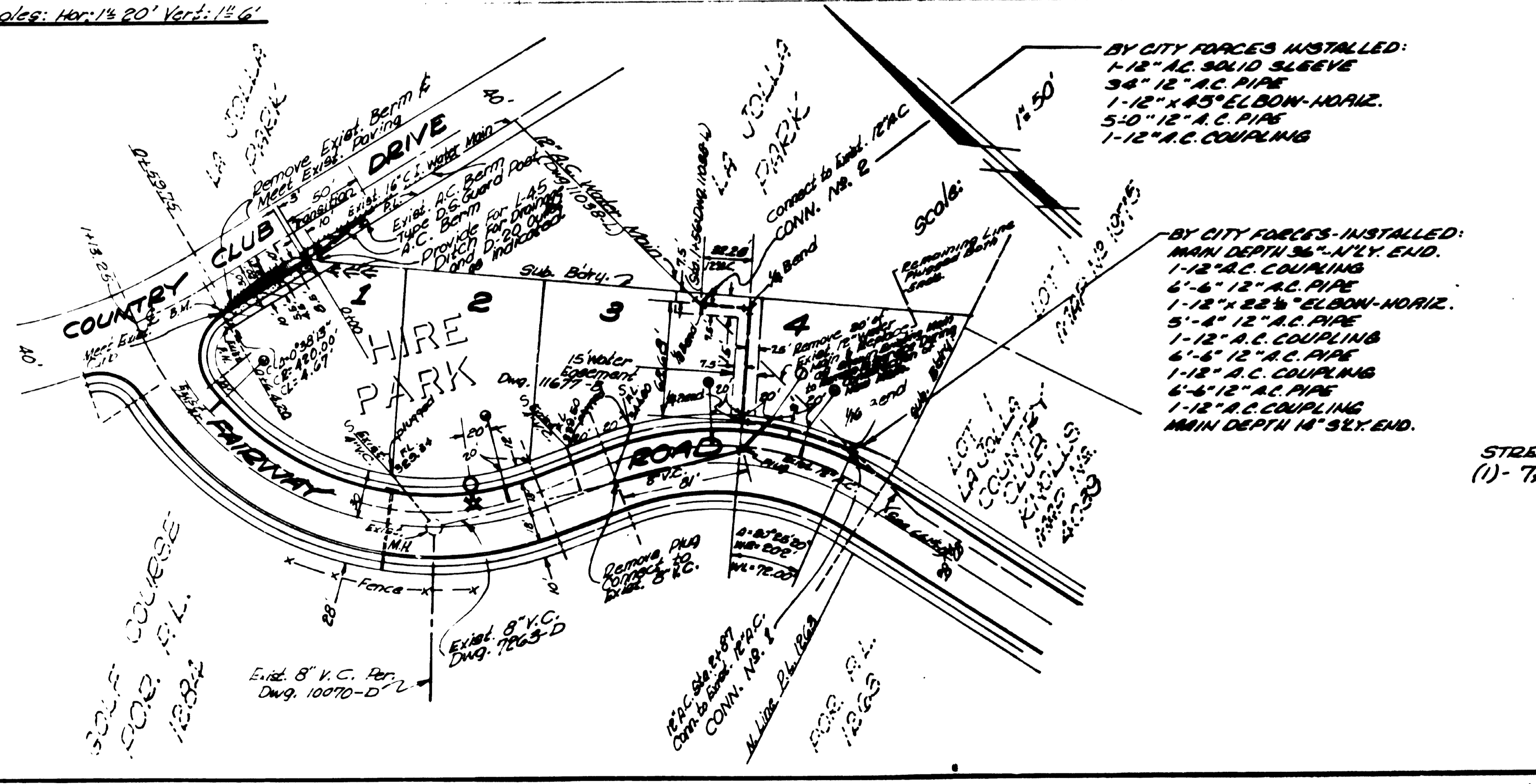
NOTE:

Prior to final placement and construction of any utility system, the subdivider shall have a copy of the plans and specifications of the City of San Diego Municipal Code, and the City will connect.



KEY & LOCATION MAP
HILDE PARK
NO SCALE

STREET LIGHTS SHOWN THUS: (1) - 7,000 LUMEN, 175 WATT, TYPE III



BY CITY FORCES INSTALLED:

- 1-12" A.C. SOLID SLEEVE
- 34" 12" A.C. PIPE
- 1-12" X 45° ELBOW-HORIZ.
- 5-0" 12" A.C. PIPES
- 1-12" A.C. COUPLING

BY CITY FORCES INSTALLED:

- MAIN DEPTH 36" N.Y. END.
- 1-12" A.C. COUPLING
- 6'-6" 12" A.C. PIPE
- 1-12" X 22 1/2° ELBOW-HORIZ.
- 5'-4" 12" A.C. PIPE
- 1-12" A.C. COUPLING
- 6'-6" 12" A.C. PIPE
- 1-12" A.C. COUPLING
- 6'-6" 12" A.C. PIPE
- 1-12" A.C. COUPLING
- MAIN DEPTH 14" SLY. END.

Engineer of Work **Donald W. Phelps** P.C.E. 1534
 Civil & Mechanical Engineering
 134 Land Title Bldg.
 San Diego, Calif. 92101 Job No. 5585

| | |
|-------------------------------|-----------|
| CITY OF SAN DIEGO, CALIFORNIA | |
| ENGINEERING DEPARTMENT | 78001 |
| SHEET 1 OF 2 | |
| DESCRIPTION | |
| ORIGINAL | |
| AS BUILT | |
| DATE | 2-16-70 |
| CONTRACTOR | Garman |
| INSPECTOR | P.C.E. |
| DATE | 2-16-70 |
| | 13364-1-D |

AS BUILT