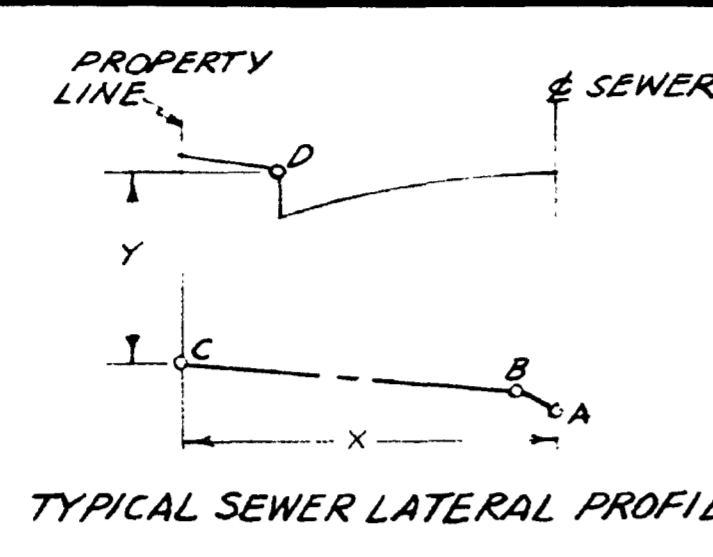
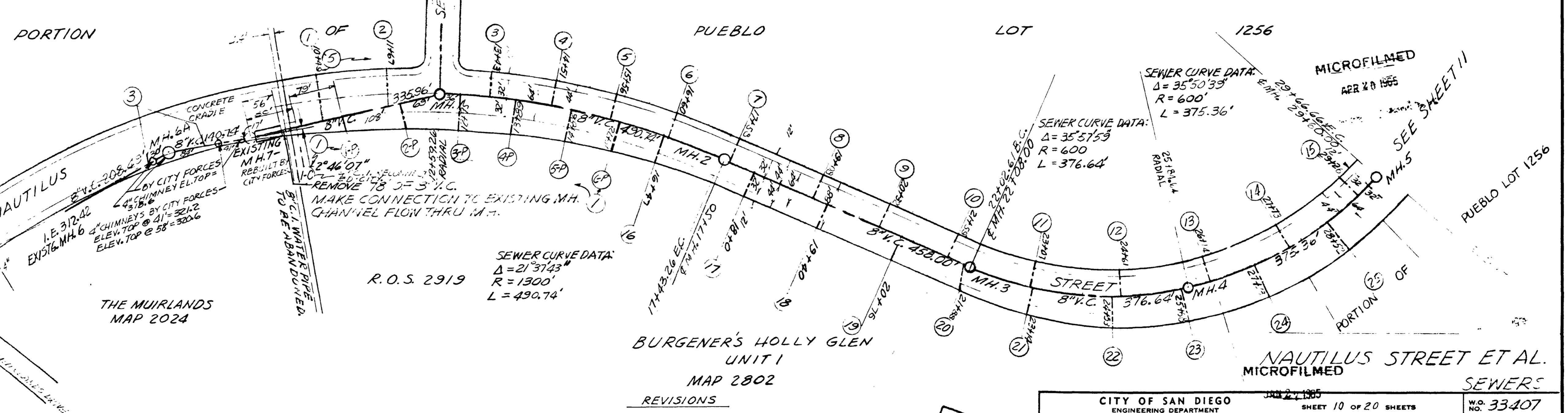
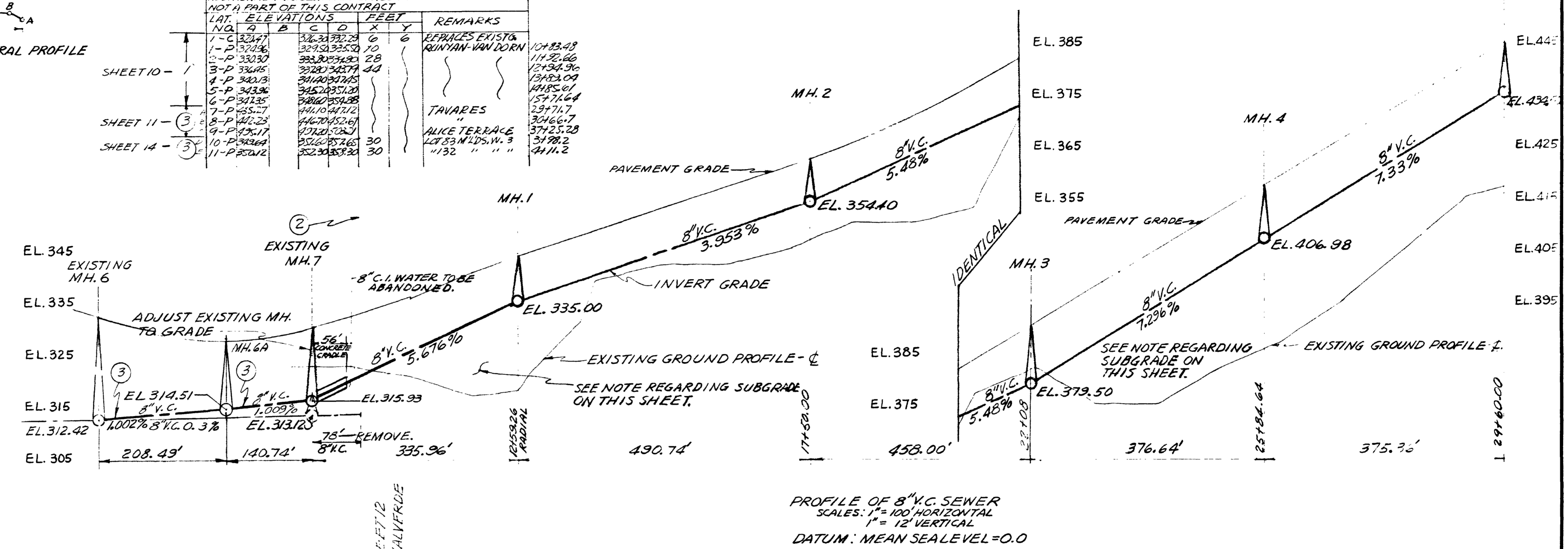


LATERAL NO.	A	B	C	D	E	REMARKS
1	32.15	32.15	32.15	32.15	32.15	
2	32.15	32.15	32.15	32.15	32.15	
3	32.15	32.15	32.15	32.15	32.15	
4	32.15	32.15	32.15	32.15	32.15	
5	32.15	32.15	32.15	32.15	32.15	
6	32.15	32.15	32.15	32.15	32.15	
7	32.15	32.15	32.15	32.15	32.15	
8	32.15	32.15	32.15	32.15	32.15	
9	32.15	32.15	32.15	32.15	32.15	
10	32.15	32.15	32.15	32.15	32.15	
11	32.15	32.15	32.15	32.15	32.15	
12	32.15	32.15	32.15	32.15	32.15	
13	32.15	32.15	32.15	32.15	32.15	
14	32.15	32.15	32.15	32.15	32.15	
15	32.15	32.15	32.15	32.15	32.15	
16	32.15	32.15	32.15	32.15	32.15	
17	32.15	32.15	32.15	32.15	32.15	
18	32.15	32.15	32.15	32.15	32.15	
19	32.15	32.15	32.15	32.15	32.15	
20	32.15	32.15	32.15	32.15	32.15	
21	32.15	32.15	32.15	32.15	32.15	
22	32.15	32.15	32.15	32.15	32.15	
23	32.15	32.15	32.15	32.15	32.15	
24	32.15	32.15	32.15	32.15	32.15	
25	32.15	32.15	32.15	32.15	32.15	
26	32.15	32.15	32.15	32.15	32.15	
27	32.15	32.15	32.15	32.15	32.15	
28	32.15	32.15	32.15	32.15	32.15	
29	32.15	32.15	32.15	32.15	32.15	
30	32.15	32.15	32.15	32.15	32.15	
31	32.15	32.15	32.15	32.15	32.15	
32	32.15	32.15	32.15	32.15	32.15	
33	32.15	32.15	32.15	32.15	32.15	
34	32.15	32.15	32.15	32.15	32.15	
35	32.15	32.15	32.15	32.15	32.15	
36	32.15	32.15	32.15	32.15	32.15	
37	32.15	32.15	32.15	32.15	32.15	
38	32.15	32.15	32.15	32.15	32.15	
39	32.15	32.15	32.15	32.15	32.15	
40	32.15	32.15	32.15	32.15	32.15	
41	32.15	32.15	32.15	32.15	32.15	
42	32.15	32.15	32.15	32.15	32.15	
43	32.15	32.15	32.15	32.15	32.15	
44	32.15	32.15	32.15	32.15	32.15	
45	32.15	32.15	32.15	32.15	32.15	
46	32.15	32.15	32.15	32.15	32.15	
47	32.15	32.15	32.15	32.15	32.15	
48	32.15	32.15	32.15	32.15	32.15	
49	32.15	32.15	32.15	32.15	32.15	
50	32.15	32.15	32.15	32.15	32.15	
51	32.15	32.15	32.15	32.15	32.15	
52	32.15	32.15	32.15	32.15	32.15	
53	32.15	32.15	32.15	32.15	32.15	
54	32.15	32.15	32.15	32.15	32.15	
55	32.15	32.15	32.15	32.15	32.15	
56	32.15	32.15	32.15	32.15	32.15	
57	32.15	32.15	32.15	32.15	32.15	
58	32.15	32.15	32.15	32.15	32.15	
59	32.15	32.15	32.15	32.15	32.15	
60	32.15	32.15	32.15	32.15	32.15	
61	32.15	32.15	32.15	32.15	32.15	
62	32.15	32.15	32.15	32.15	32.15	
63	32.15	32.15	32.15	32.15	32.15	
64	32.15	32.15	32.15	32.15	32.15	
65	32.15	32.15	32.15	32.15	32.15	
66	32.15	32.15	32.15	32.15	32.15	
67	32.15	32.15	32.15	32.15	32.15	
68	32.15	32.15	32.15	32.15	32.15	
69	32.15	32.15	32.15	32.15	32.15	
70	32.15	32.15	32.15	32.15	32.15	
71	32.15	32.15	32.15	32.15	32.15	



NOTE: PIPE SUBGRADE IN EMBANKMENT AREAS SHALL CONSIST OF 1" THICKNESS OF 1" MAXIMUM CRUSHER RUN MATERIAL.

LAT.	ELEVATIONS	FEET	REMARKS
1-P	330.28	10	REPLACES EXIST. QUINLAN-VAN DORN
2-P	330.30	28	
3-P	330.45	48	
4-P	332.38	34	
5-P	343.36	30	TAVARES
6-P	342.35	30	
7-P	345.27	30	
8-P	346.25	30	ALICE TERRACE
9-P	346.17	30	
10-P	352.64	30	
11-P	352.30	30	



- REVISIONS
- ADDED 7 SEWER LATERALS - N.P.O.T.C.
 - REVISED GRADE - MH.7 - EXIST. TO MH.5; ADDED MH.6A.
 - REPLACED SEWER MAIN - EXIST. MH.6 TO EXIST. MH.7.
 - REVISED STATIONING; MH. DISTANCES.
 - ADDED LATERAL STATIONS.

CITY OF SAN DIEGO		ENGINEERING DEPARTMENT		SHEET 10 OF 20 SHEETS		W.P. 33407	
CHANGE	BY	DATE	APPROVAL	DATE	APPROVAL	DATE	APPROVAL
SEE LIST AT LEFT							
AS BUILT - B.E. JACKSON							
CONSTRUCTION RECORD							
DATE PLATED	8-23-66	DATE COMPLETED					
CONTR. GRIFFITH CO.	INSP. F.WELKER	TRAFFIC					
FIELD BOOK							1175241-D

AS BUILT MICROFILMED